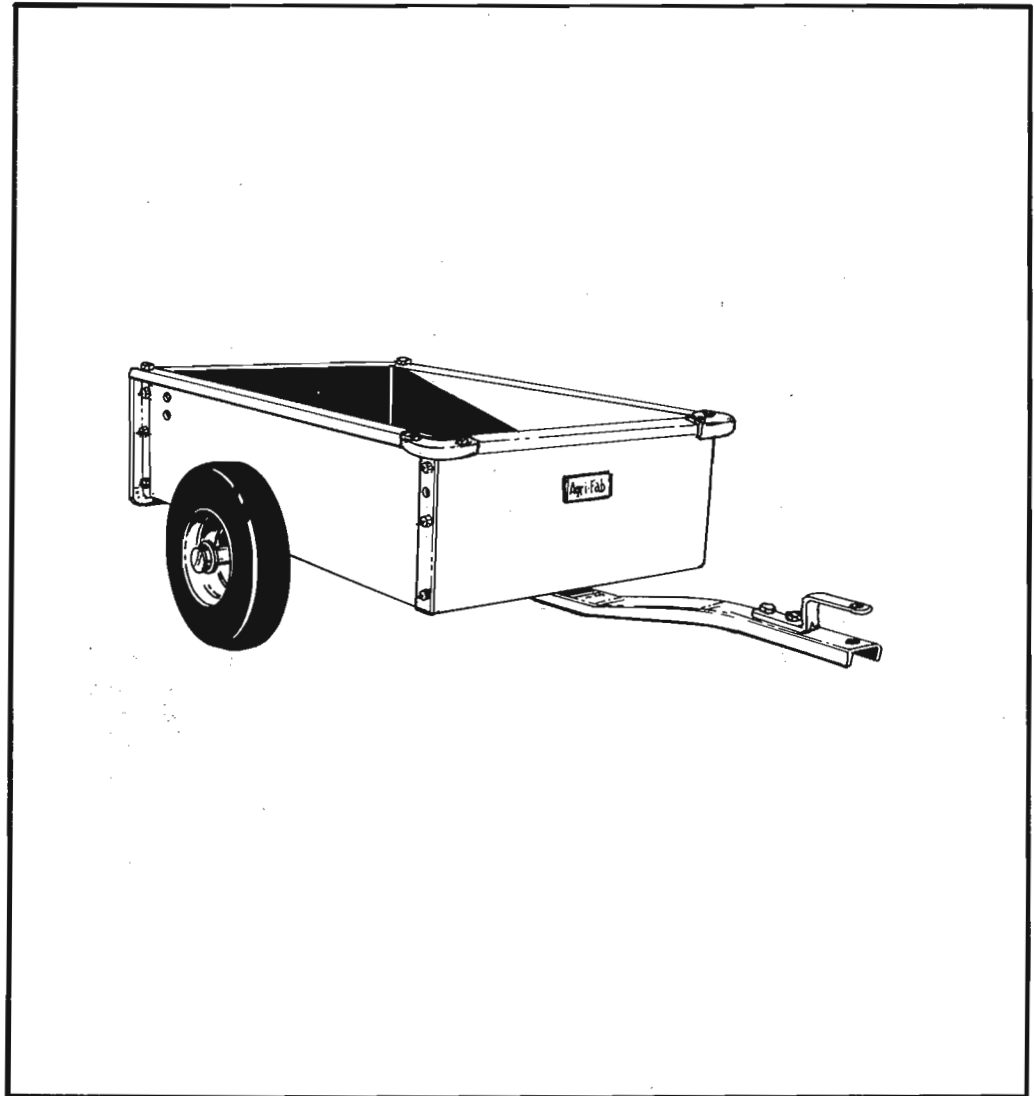


**owners  
manual**

**Model No.  
45-0100**



**7 CU FT. UTILITY CART**

**IMPORTANT:**

Read Rules for  
Safe Operation  
and Instructions  
Carefully

- **Assembly**
- **Operating**
- **Maintenance**
- **Repair Parts**



• 303 WEST RAYMOND • SULLIVAN, ILLINOIS 61951

# ASSEMBLY INSTRUCTIONS

## IDENTIFICATION OF HARDWARE

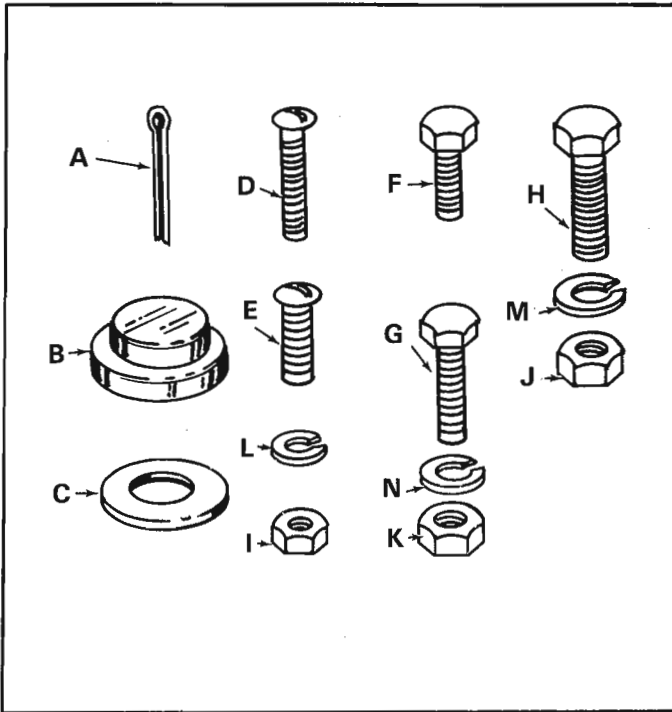


FIGURE 1

## IDENTIFICATION OF LOOSE PARTS

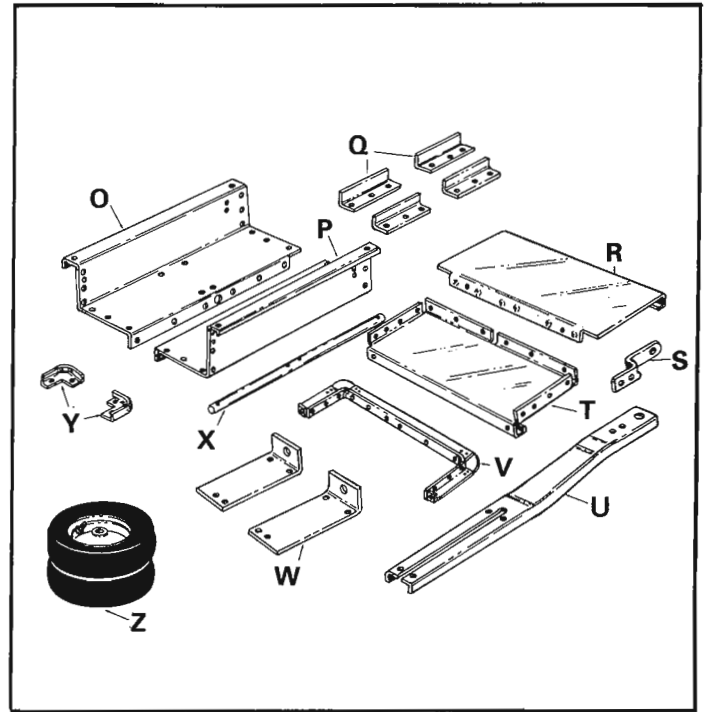


FIGURE 2

Contents of Hardware Pack:  
(See figure 1)

REF.	QUAN.	DESCRIPTION
A	.2	Cotter Pins 1/8" x 1" Long
B	2	Hub Caps
C	4	Flat Washers 1-5/8" Long
D	2	Slotted Pan Head Bolts 1/4-20 x 1-1/4 Long
E	12	Slotted Truss Head Bolts 5/16-18 x 3/4" Long
F	24	Hex Head Bolts 1/4-20 x 1/2" Long
G	6	Hex Head Bolts 1/4-20 x 3/4" Long
H	2	Hex Head Bolts 3/8-16 x 1" Long
I	32	Hex Nuts 1/4 -20 Thread
J	2	Hex Nuts 3/8-16 Thread
K	12	Hex Nuts 5/16-18 Thread
L	32	Lock Washers 1/4" I.D.
M	2	Lock Washers 3/8" I.D.
N	12	Lock Washers 5/16" I.D.

LOOSE PARTS  
(See figure 2)

- O Cart Body — Right Hand
- P Cart Body — Left Hand
- Q Tailgate Guides
- R Tailgate
- S Hitch Bracket
- T Front Panel
- U Draw Bar Tongue
- V Tailgate Reinforcement Bracket
- W Wheel Supports
- X Axle
- Y Corner Caps
- Z Wheels

1. Remove the hardware pack and all loose parts from the carton. Be sure carton is empty before discarding.
2. Layout all the parts as shown in figure 2.
3. Position cart body halves (O) and (P) upright as shown in figure 3. **NOTE:** Large diameter holes and notches to the top.



Bolts are tightened later in step 12, page 4.

5. Position the wheel supports (W) in place on the bottom of cart. See figure 4.
6. Secure wheel support to cart with four slotted head screws (E), lock washers (N) and hex nuts (K). See figure 4. Heads of screws go to the inside of cart.
7. Place the axle (X) through wheel supports and secure with two slotted heads screws (D), lock washers (L) and hex nuts (I). See figure 4.

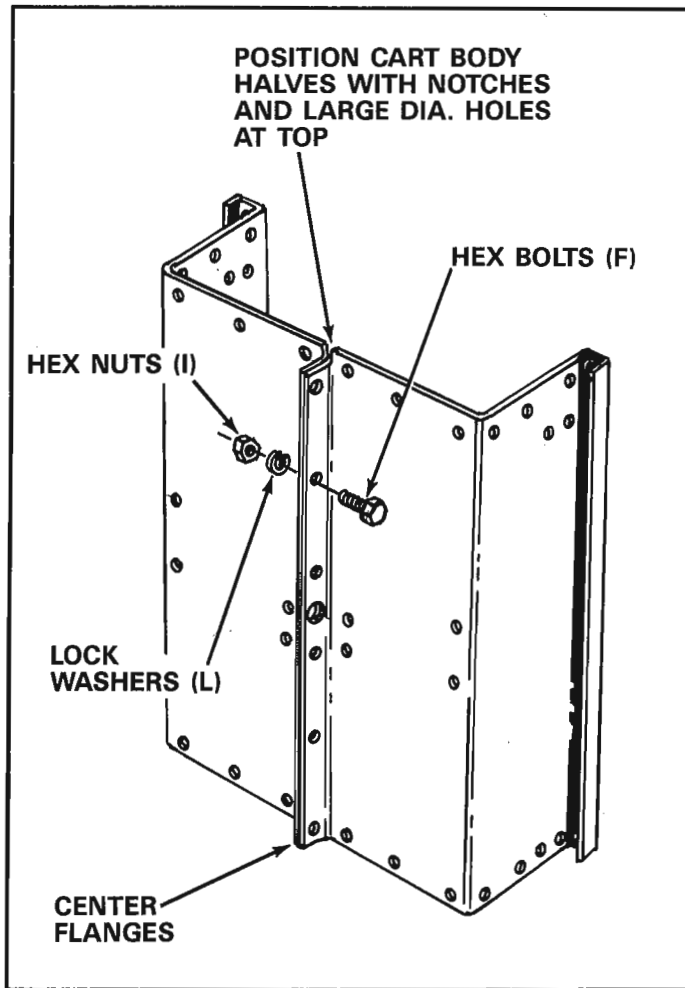


FIGURE 3

4. Start bolts (F), lock washers (L) and hex nuts (I) through flanges, only make finger tight until all 6 bolts are in place. See figure 3.

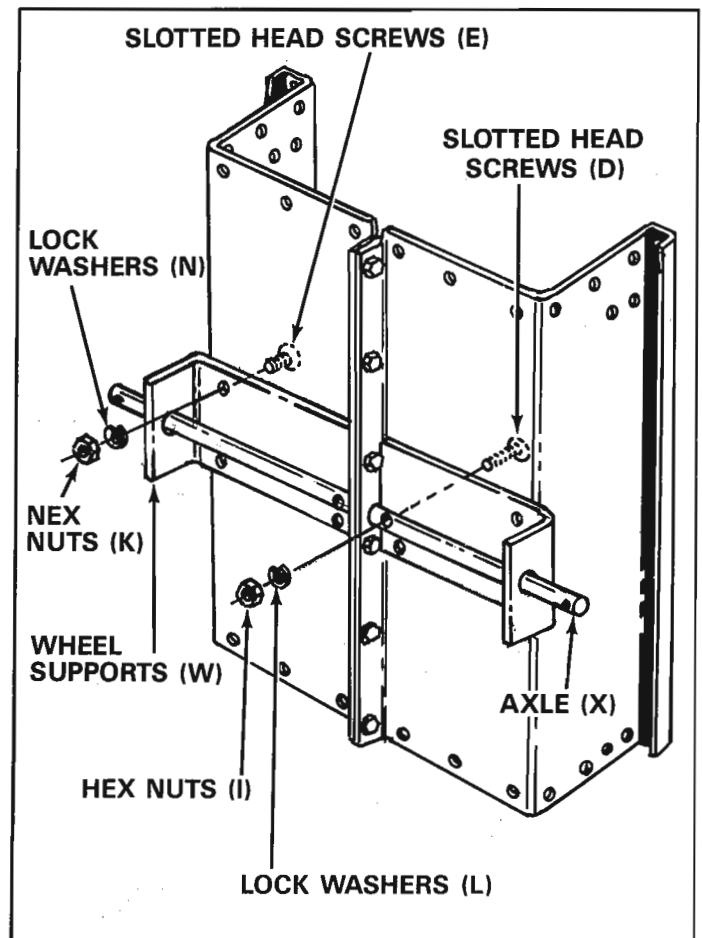


FIGURE 4

8. Position the tailgate reinforcement bracket (V) over end of cart. See figure 5.
9. Start slotted screws (E) through bottom of cart (heads of screws to the inside of cart) and reinforcement bracket. Secure finger tight with hex nuts (K) and lock washers (N). See figure 5.
10. Position the tailgate guides (Q) so that the holes line up with reinforcement bracket and cart body. Refer to tailgate guide detail in figure 5.
11. Secure with six hex bolts (G) lock washers (L) and hex nuts (I). See figure 5. Tighten all bolts and nuts.

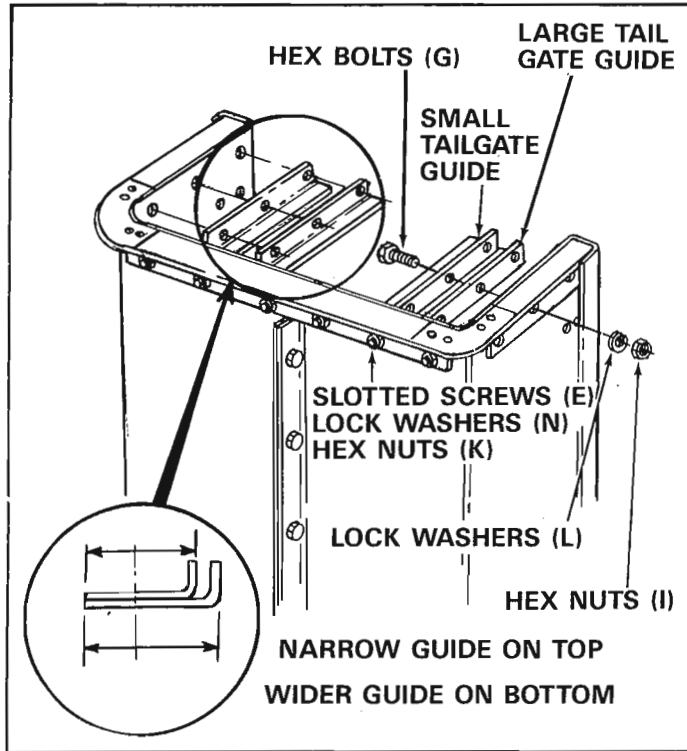


FIGURE 5

12. Place cart down, so that it rests on top flange, as shown in figure 6. Tighten bolts in center flanges, left finger tight in step 4.

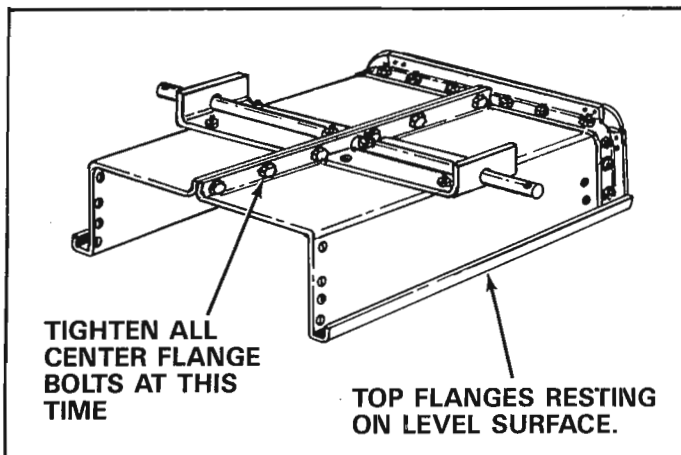


FIGURE 6

13. Lift the cart up and stand on tailgate reinforcement bracket and proceed with assembly step 14. See figure 7.
14. Assemble front panel to open end of cart body (see note below) using 1/4" x 1/2" hex bolts (F), lock washers (L) and hex nuts (I). Bolt heads to inside of cart. See figure 7.

**NOTE:** See step no. 16 for assembly of drawbar tongue and leave the (2) center bolts out for later assembly.

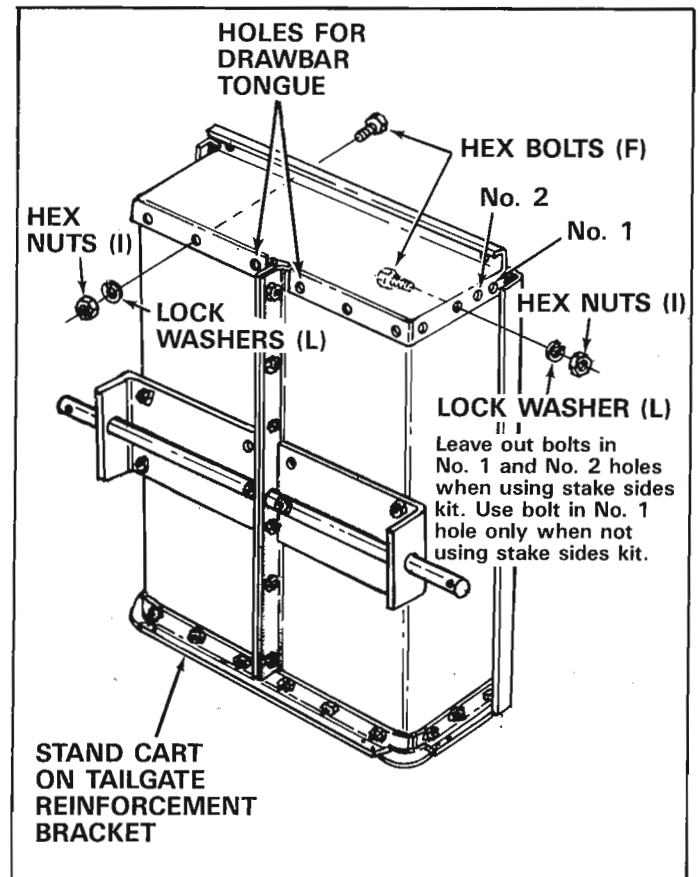


FIGURE 7



**Do Not** assemble bolts in No. 1 or No. 2 holes when using optional stakesides kit (each side). See figure 7.

15. Assemble two front top corner caps (Y) and two bolts in top flanges through tailgate reinforcement bracket using 1/4" x 1/2" hex bolts (F), lock washers (L) and hex nuts (I). See figure 8.

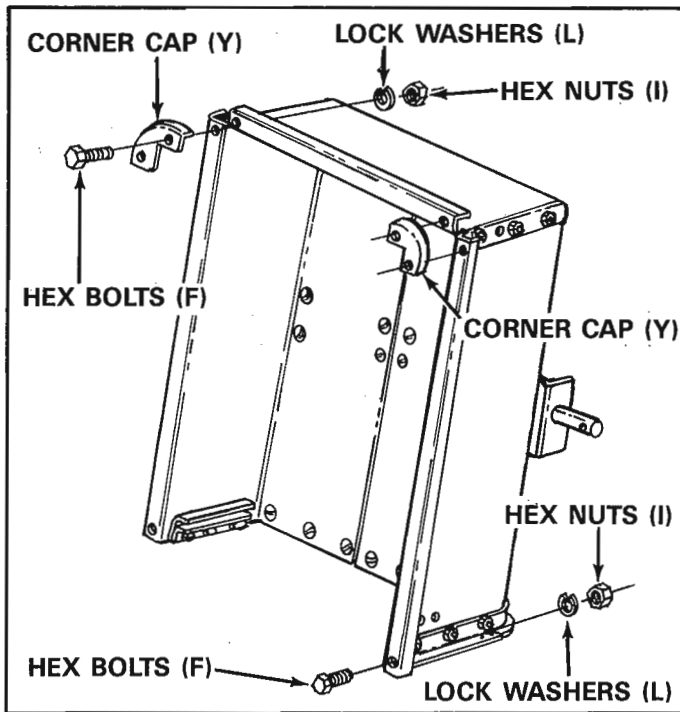


FIGURE 8

16. Assemble the draw bar tongue (U) to the bottom of cart, open side of tongue facing down. Slide slot in tongue over center flanges and secure with two hex head bolt (F), lock washers (L) and hex nuts (I) at front of cart. See figure 9. Secure bottom of tongue at wheel support with two slotted head screws (E), lock washers (N) and hex nuts (K). See figure 9.

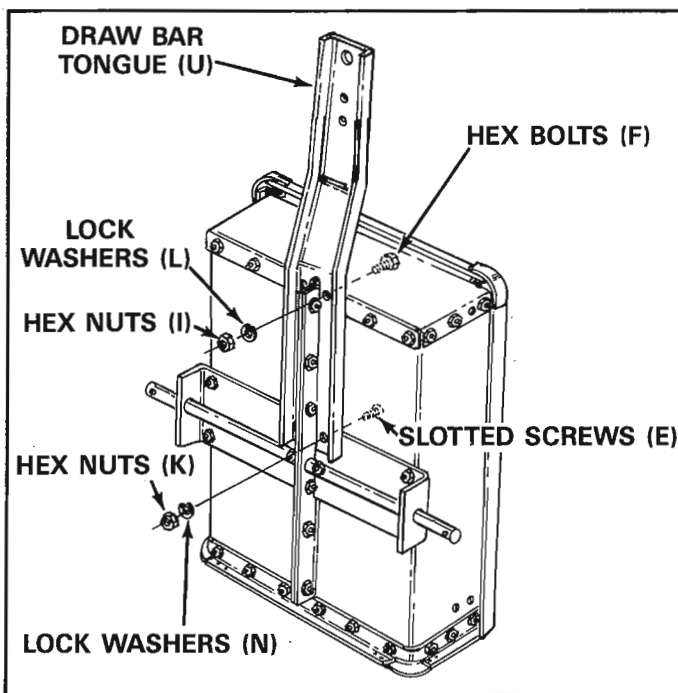


FIGURE 9



**CAUTION**

It may be necessary to block cart in upright position to prevent tipping when installing wheels.

17. Assemble large diameter flat washer (C), wheel, another flat washer (C), cotter pin (A) and hub cap (B) to each axle end.



**NOTE**

Position valve stem to outside when installing wheels on axle. See figure 10.

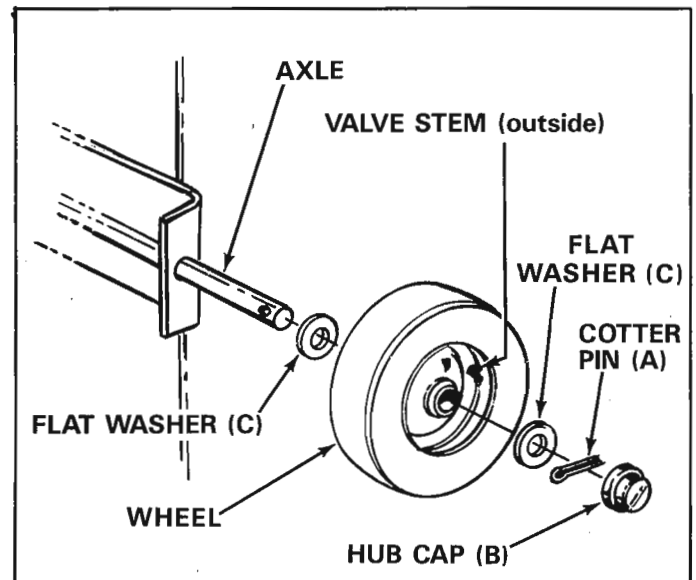


FIGURE 10

18. Assemble hitch bracket to drawbar tongue, using 3/8" x 1" long hex bolts (H), lock washers (M) and hex nuts (J). See figure 11.

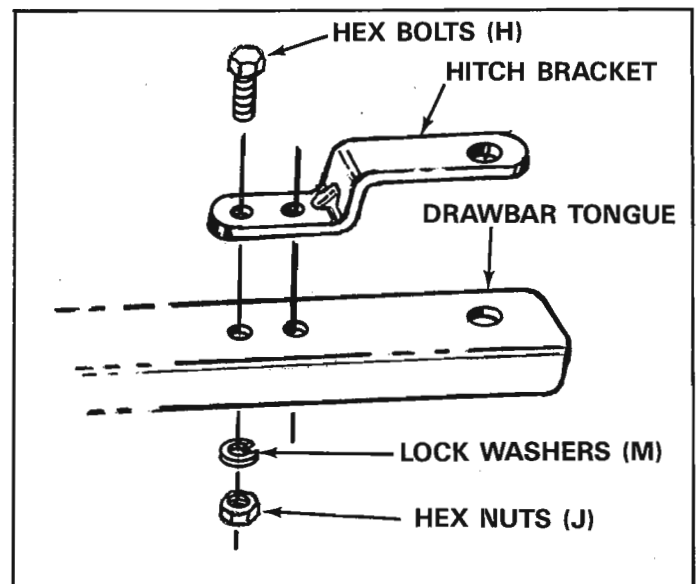


FIGURE 11



19. Lower the cart assembly to rest on wheels. This completes the cart assembly. Be sure to read safety rules and operating instructions before using your new utility cart.



**Weight limit - See specifications for each model. One cubic foot of dirt weights approximately 150 lbs.**  
**Do Not exceed cart weight capacity.**

## GENERAL SAFETY PRECAUTIONS

Preventing accidents is the responsibility of every equipment operator. The following general safety precautions must be fully understood and followed by every operator.

1. Do not at anytime carry passengers in this cart. It is designed for carrying materials only and not intended to carry passengers.
2. Do not tow this utility cart on a public thoroughfare at any time. The operator is risking injury from passing vehicles. Most local ordinances prohibit operating a cart and tractor such as this on a public thoroughfare.
3. When towing cart do not drive too close to a creek or ditch and be alert for holes and other hazards. The above could cause you to lose control of the cart and tractor.
4. Be careful on any grade (hill) and stay off of steep grades.
5. Maximum towing speed - 10 M.P.H.

### SPECIFICATIONS; MODEL 41-0100-7.0 Cu. Ft. (Heap "10")

<b>Bed:</b>	18 Ga. Steel Construction - 29"W x 42"L x 12"H; Approx. Inside Dim. - 26-1/4" x 39"
<b>Tailgate:</b>	Removable with Reinforced Guides
<b>Tires:</b>	14.00" x 4.00" Pneumatic, Rib Tread
<b>Axle:</b>	5/8" Dia. Steel
<b>Capacity:</b>	Up to 450 Lbs. Max.
<b>Finish:</b>	Baked Enamel - Body: Red; Black
<b>Approx. Sh. Wt.:</b>	81 Lbs.
<b>Carton Size:</b>	14-1/2"H x 16-3/4"W x 42-1/2"L (5.97 Cu. Ft.)

## OPERATION

To remove material from the trailer box, remove the tailgate by lifting it straight up and out from between the guides.

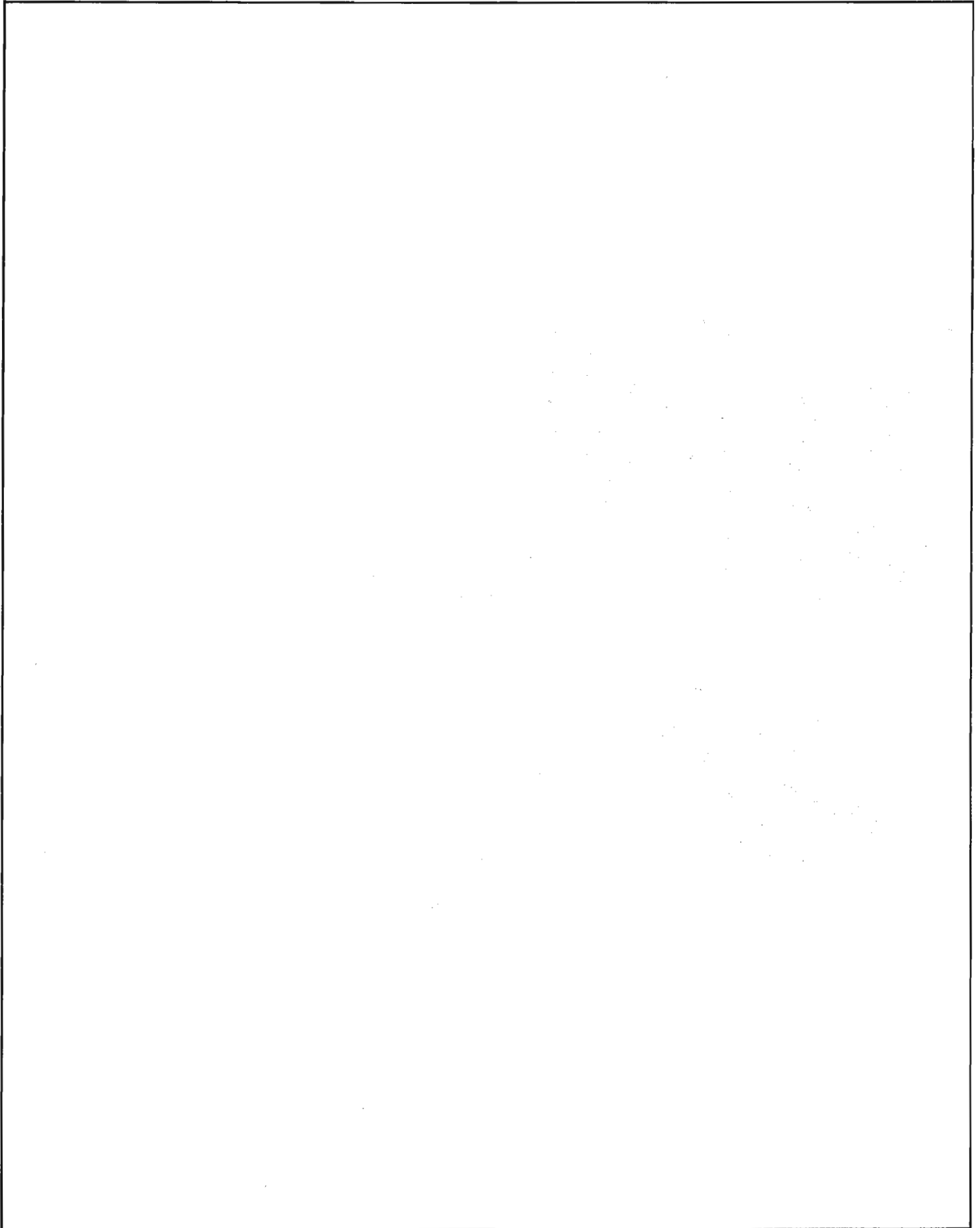


**For best handling, do not load trailer too heavily behind center of axle.**

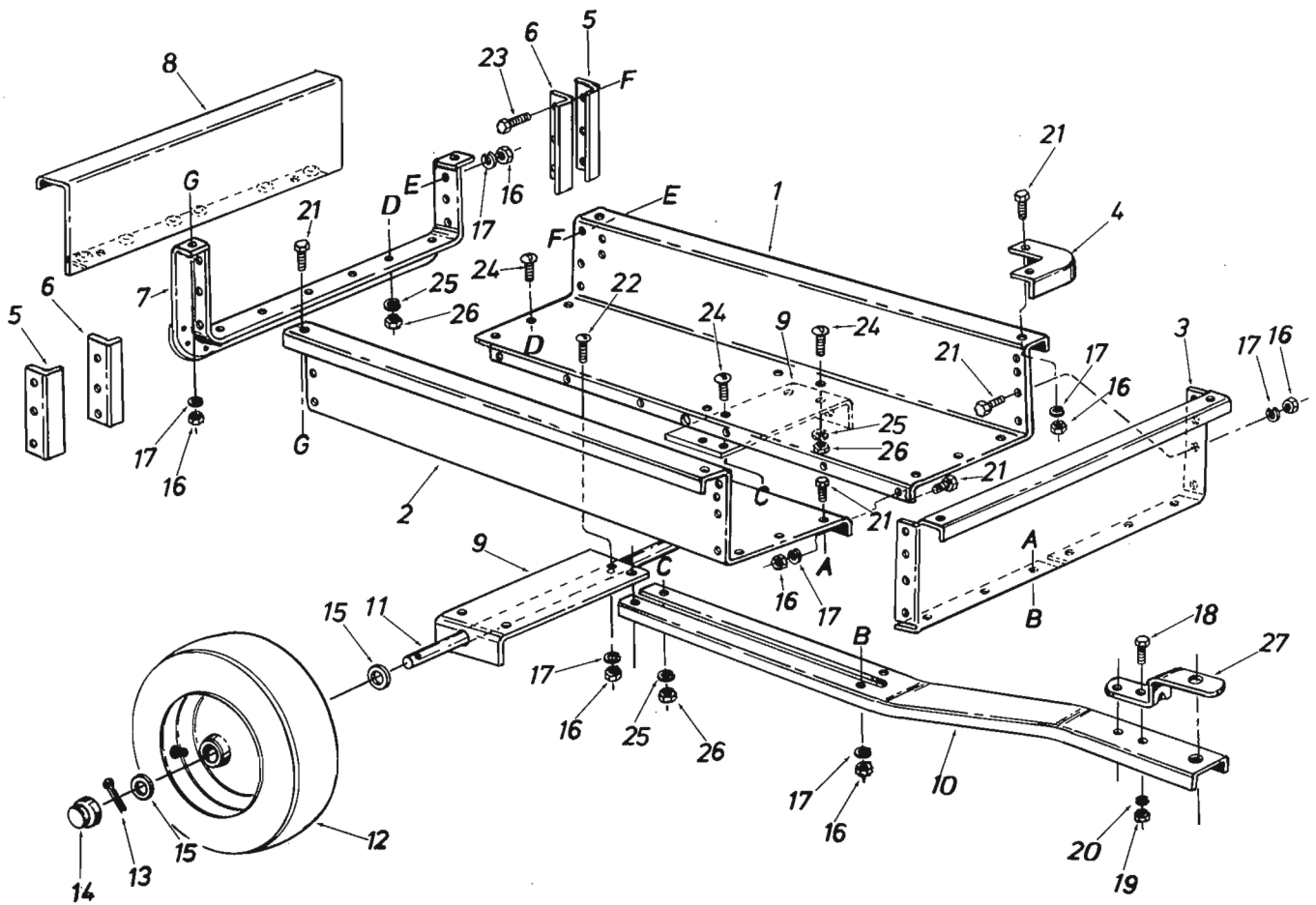
## MAINTENANCE

1. Grease or oil wheel bearings occasionally. Use automotive wheel bearing type grease or 20 weight oil.
2. Recommended tire pressure is 12-14 Lbs.

# Notes



# 7 CU. FT UTILITY CART MODEL 45-0100





PARTS LIST FOR 7 CU. FT. UTILITY CART MODEL 45-0100

REF. No.	PART No.	QUAN.	DESCRIPTION
1	23511	1	Cart Body — L.H.
2	23512	1	Cart Body — R.H.
3	23491	1	Front Panel
4	23484	2	Cap, Front Corner
5	23486	2	Guide, Tailgate — Inside
6	23547	2	Guide, Tailgate — Outside
7	62459	1	Sub-Ass'y., Rear Angle
8	23501	1	Tailgate
9	23509	2	Support, Wheel
10	23510	1	Draw Bar Tongue
11	23480	1	Axle 5/8" Dia.
12	43756	2	Wheel Ass'y. 14 x 4
13	43010	2	Pin, Cotter 1/8" Dia. x 1.00" Lg.*
14	43014	2	Cap, Hub 1-1/2 Black
15	43754	4	Washer Flat 1-5/8" O.D. x 21/32" I.D.
16	43178	32	Nut, Hex 1/4-20 Thd.*
17	43177	32	Lock Washer, Spring 1/4" I.D.*
18	43001	2	Bolt, Hex 3/8-16 x 1" Lg. (Grade 5)
19	43015	2	Nut, Hex 3/8-16 Thd.*
20	43003	2	Lock Washer, Spring 3/8 I.D.*
21	43175	24	Bolt, Hex Hd.1/4-20 x 1/2" Lg.*
22	43752	2	Bolt, Slot-Pan Hd. 1/4-20 x 1-1/4" Lg.*
23	43012	6	Bolt, Hex Hd. 1/4-20 x 3/4" Lg. (Grade 5)
24	43814	12	Bolt, Slotted Truss Hd. 5/16 -18 x 3/4" Lg.*
25	43086	12	Lock Washer, Spring 5/16" I.D.*
26	43083	12	Nut, Hex 5/16-18 Thd.*
27	23014	1	Bracket, Hitch

\*Purchase Common Hardware Locally.

For Agri Fab Discount Parts Call 606-678-9623 or 606-561-4983

For Agri Fab Discount Parts Call 606-678-9623 or 606-561-4983

For Agri Fab Discount Parts Call 606-678-9623 or 606-561-4983

**REPAIR PARTS**

303 West Raymond Street  
Sullivan, Illinois 61951

217/728-8388

[www.mymowerparts.com](http://www.mymowerparts.com)